



Family Residences and Essential Enterprises, Inc. (FREE)
191 Bethpage-Sweet Hollow Road, Old Bethpage, NY 11804
Phone: 516-870-1600 Fax: 516-870-1660

FOR IMMEDIATE RELEASE: July 30, 2015

CONTACT: Patrice Radowitz, Tel: [516-870-1621](tel:516-870-1621)/Cell: [631-553-7432](tel:631-553-7432)
Email: pradowitz@familyres.org

Andy Robles: 516-603-0447
Email: familyres.free@gmail.com

RECEPTION HELD FOR ARTISTS WITH AUTISM AND DIFFERENT ABILITIES AT LEADING LONG ISLAND GALLERY

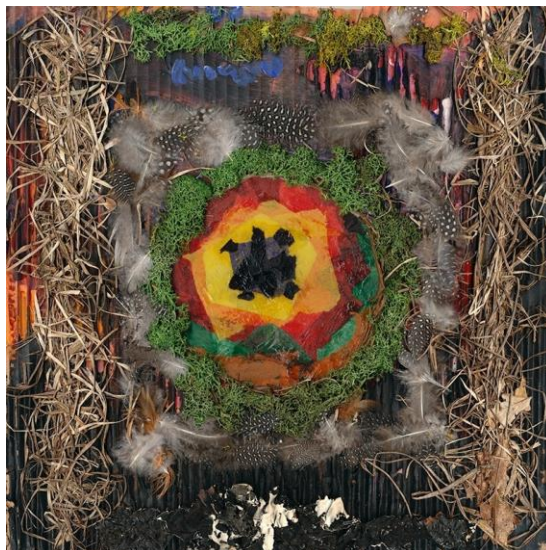


FREE Artists display their works

OLD BETHPAGE, NY - Family Residences and Essential Enterprises, Inc. (FREE) held a “Meet the Artists” reception at **b.j. spoke gallery** in Huntington on Saturday, July 11th. The reception honored artists participating in their fine art and art therapy programs who were invited to exhibit their artwork at the gallery. The exhibit, **“Breaking Boundaries 2015”** ran throughout the month of July.

More...

FREE, a leader in the field of human services dedicated to helping individuals of all abilities realize their full potential and prevail over life's challenges, believes that Art Therapy provides a powerful means for healing and communication for anyone, but especially for people who find it difficult to express their thoughts and feelings through spoken words alone



"OUT IN THE FOREST WOODS" by Anthony Abbate

There are 30 artworks created by **FREE** artists dispersed among **b. j. spoke gallery** member's work to create **"Breaking Boundaries 2015"** in which the art speaks for itself and viewers won't know, at first glance, whose work is hanging - a gallery member or **FREE** artists; The exhibition intends to encourage the viewer to ask the question, "What if there is no dis-ability, only differing styles of self-expression?" This will combat stigma as it simultaneously opens the door for people with disabilities to participate more fully in a community setting while entering the world of art commerce, as works were available for sale.

About b.j. spoke gallery

b. j. spoke gallery is a not-for-profit 501 (c) (3) organization founded with the belief that a partnership between artists and the public is an essential relationship. The gallery provides opportunities for artists to experience responses to their work, and for the public to increase its aesthetic awareness in the deciphering of the artist's intent through dialogue.

The gallery strives to further an understanding of the arts by holding exhibits of members' work, including invitational and solo shows, exchange exhibits with other galleries, two annual national juried art competitions, gallery talks, panel discussions, workshops and demonstrations. In an effort to bring the under-served artist to the attention of the Long Island community, the gallery maintains an outreach program for emerging artists.

In addition, use of the gallery is extended for benefits, lectures, poetry readings, musical evenings and other exhibits by not-for-profit groups, whose mission reflects the objectives of the gallery. The gallery has played host to such groups as the Art League of Long Island, the Long Island Chapter of the AIDS Collective, the Huntington Breast Cancer Action Coalition, the Huntington Arts Council, the Weed and Seed After School Project and most of the Long Island's colleges and universities' art departments. b. j. spoke gallery is located at: 299 Main Street, Huntington NY 11743. For more information, please call 631-549-5106 or visit www.bjspokegallery.com.

More...

About Family Residences and Essential Enterprises, Inc. (FREE)

Family Residences and Essential Enterprises, Inc. (FREE) founded in 1977 and headquartered in Old Bethpage, benefits and proudly supports more than 4,000 individuals with intellectual disabilities, mental illness and traumatic brain injury. It is the mission of FREE to help individuals of all abilities realize their full potential. FREE provides a diverse array of supports and services including: housing, recovery services, transition to work, employment, day, community and family services, respite, crisis services, education and after-school support, primary and specialty health care and advocacy. For more information, please call 516-870-7000 or visit www.familyres.org.

#